

Online Placement Testing

Available at www.oxfordenglishtesting.com

Test your students online with our automatically marked placement tests. Results are available instantly, with a range of information to help you place students into the right class, or differentiate between students in mixed ability classes.

Accurate and reliable

All our online placement tests are written by testing experts, based on the latest testing research, and pretested and piloted by thousands of students worldwide, giving you an accurate and reliable test.

Computer-adaptive

Tests are computer-adaptive making them short whilst still accurate. This means that most questions will be at a level students can answer, giving them a positive testing experience. This is a particular advantage for younger learners.

Easy access and administration

Taken online at www.oxfordenglishtesting.com, which means students can do the test anywhere with a broadband internet connection. There is no installation or maintenance. Easily managed, with the system emailing students their login details, or creating printable login slips.

Oxford Online Placement Test

BEGINNER TO ADVANCED (A1–C2)

AGE 15+



- Trusted by Universities, Language Schools, Companies, and Ministries worldwide.
- Suitable for either British or American English, with the option of a mix of accents in the *Listening* section.
- Two sections: *Use of English* and *Listening*.
- Tests both grammar 'form' and 'meaning', an excellent predictor of language ability.
- Around 45 questions taking on average 50 minutes to complete.
- Results show CEFR levels, score out of 120, time taken, and more.

Oxford Young Learners Placement Test **NEW**

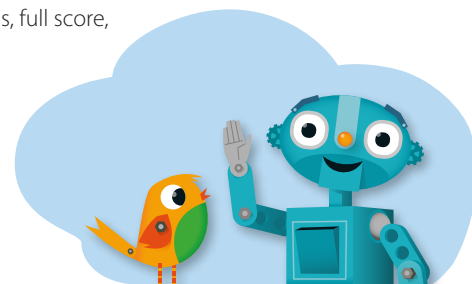
Child-friendly assessment

PRE-BEGINNER TO INTERMEDIATE (A0-B1)

AGE 7–12



- Ideal for mixed ability classes, helping you target your teaching.
- British English.
- Friendly design and task types put children at ease, giving young learners a positive testing experience.
- Two sections: *Language Use* and *Listening*.
- Around 30 questions taking on average 35 minutes to complete.
- Results show CEFR levels, full score, and more.



Oxford Placement Tests 1 and 2

BEGINNER TO ADVANCED (A1–C2)

DAVE ALLAN

Two pen and paper test packs with 40 test papers each, and an answer key.

➔ See www.oup.com/elt